

Fall 2010 Bird Banding Summary

Metro Beach Metropark

Allen Chartier
Permit No. 23156

INTRODUCTION

The fall of 2010 was the sixth fall season of a renewed banding study. Net lanes were completely dry at the beginning of the banding season, and only small patches of standing water recurred briefly after rainstorms. Temperatures during all three months were near normal, while precipitation may have been slightly above normal. Vegetation did very well in areas that had been burned, and areas that had not. Jewelweed (*Impatiens capensis*), an important nectar source for migrating hummingbirds, was 4-5 feet tall around the Willow, Field Edge, and Field Nets in early August and had lots of blooms through mid-September. It was not significantly browsed by White-tailed Deer as it was last fall. Vegetation around the Field Nets was about normal, with perhaps more abundant Boneset (*Eupatorium perfoliatum*) which attracted many butterflies throughout the fall. The Red-osier Dogwood (*Cornus stolonifera*) on either side of the Field Edge net, where hummingbird feeders are placed to lure them in, remains dead after the apparent accidental spraying of them last fall. Despite the barren nature of the area around this net, it was still fairly productive. Hopefully the dogwood in this area will recover in the coming years. The western Willow net was placed at an angle different from usual due to the more abundant growth of the uncommon Monkey Flower (*Mimulus ringens*) in the area. *Phragmites* was still present in a few areas surrounding the Field Nets but not as abundantly as last fall. Spraying of herbicide was again conducted in early September as part of a multi-year program to eradicate this invasive from the park. Bird banding in this area will provide a unique opportunity to study the response of breeding and migrating birds to the eradication of *Phragmites*. White-tailed Deer remain a problem in the banding area, though only one mist net was destroyed this fall. They remain so accustomed to people that they cannot be scared away.

FALL 2010 RESULTS

Banding was conducted on 24 days between 7 August and 3 November with nets open a total of 154.50 hours (1776.69 net hours). This meets the desired coverage level, though a couple days were “non-standard” with fewer nets run with one (or no) assistants. This was the second highest number of net hours since 2005 and almost identical to 2009. Hummingbird feeders and thistle socks were placed in the same locations as last year, Field Edge and Field respectively, though the thistle was put out at the beginning of the season instead of late September. Early morning audio-luring for Northern Saw-whet Owls was attempted in late October and early November for the third fall season, but as with the previous two fall seasons, none were captured. Prime time for capturing these migrant owls tends to be between 10:00 p.m. and 2:00 a.m. The total of 2201 new birds of 71 species was the highest ever at this locale for number banded, and the second highest for number of species and tied with 2009. Also there were 2368 recaptures and 53 released unbanded, for a total of 2522 captures. The overall capture rate was 141.9 birds per 100 net hours, the highest ever by a considerable margin.

A comparison summary of all fall banding results since 2005 is shown in Table 1 below.

Table 1. Comparisons of annual fall banding effort, capture rates, and species diversity.

Year	Days	Net Hrs.	No. Banded	No. Recaptures	Released unbanded	Total Captures	Capture Rate*	No. Species
2005	22	1066.00	868	102	26	996	93.4	58
2006	24	1618.19	1493	155	33	1681	103.9	60
2007	19	1336.94	959	116	36	1111	83.1	60
2008	22	1891.00	1841	341	40	2222	117.5	77
2009	22	1765.44	1639	231	32	1902	107.7	71
2010	24	1776.69	2201	268	53	2522	141.9	71

*Capture rate is defined as number of individuals per 100 net hours.

Peak days of more than 100 birds banded are notable, with a total of only 41 such days between 1989-2008. Before 2008 no more than two such days per fall season was the norm. This season there were ten days with more than 100 birds, the most ever: 202 on 9 October (one short of the all-time record), 180 on 29 September, 175 on 8 September, 168 on 29 October (very late for so many birds), 157 on 7 October, 151 on 15 September, 125 on 25 September, 114 on 5 September, 109 on 14 October, and 108 on 13 October.

Ruby-throated Hummingbird numbers were the third highest since 2005, and slightly above the recent 5-year average. This was likely due to the good growth of Jewelweed this year. Woodpeckers were scarce. Numbers of all flycatcher species were low, and significantly lower than last year. Eastern Phoebe was missed entirely for only the second time since 2005 (none were observed in the banding area either). Vireos returned to low numbers, suggesting that last year's slight increase may have been unusual. Record numbers of Black-capped Chickadees were banded, but not what was expected based on regional reports of significant irruptions. There were also record numbers of Brown Creeper and House Wren, the latter possibly due to good breeding productivity. Kinglets tend to move through the banding area in waves, and this year birders reported significant waves no less than three times between our banding dates, suggesting that much higher totals are possible, even higher than the record numbers of 2006. Golden-crowned Kinglets increased slightly from last year, while Ruby-crowned numbers were the second lowest since 2005. Thrush numbers were down significantly, with both Gray-cheeked and Swainson's at about half of last year, and Veery and Wood Thrush were missed entirely for only the second time since 2005. Most American Robins in fall are banded during August, and consist mainly of juveniles. The number banded this fall was the lowest since 2005, suggesting either a poor nesting season, or they nested away from the banding area. The same might be true for Gray Catbirds, also banded in the lowest numbers since 2005.

The best news of the fall is that warblers were banded in very good numbers, with several species in record or near record numbers including Tennessee, Black-throated Blue, Blackburnian, Palm, and Blackpoll warblers. While not close to record numbers, Magnolia Warblers were the second highest and Yellow-rumped Warbler numbers were the highest since 2004. Warblers banded in low numbers included Yellow, Chestnut-sided, Bay-breasted, Mourning, Wilson's, and Canada. Black-throated Green Warbler was missed for the third year out of the past six. Northern Cardinals continued the very low numbers from last year. Sparrows were another high point of the fall season, with significant records set for American Tree Sparrow, Fox, Lincoln's, White-throated, and White-crowned sparrows, and the second highest number of Song Sparrows ever. The number of Swamp Sparrows was the third highest since 2005, but notable was their near absence before September 15. In recent years, many juveniles are banded by this time (about 50 last year), while only 8 had been banded by mid-September this year. This suggests a poor nesting season, as the birds captured from late September through October are most likely migrants from farther north. This may be related to the lateness of the burn this spring, occurring after some locally

nesting species had arrived. American Goldfinch numbers more than doubled the record set in 2008, partly explained by putting out thistle feeders in early August instead of late September, which increased the early season capture significantly.

The Northern Rough-winged Swallow on the somewhat late date of 7 October was the first ever banded here in the fall season. A Mourning Dove was the first banded here since 1992 and only the fourth ever. Two Cape May Warblers were the first since 1994. The Blue-gray Gnatcatcher was the first in fall since 1990. A Field Sparrow was the second since 2005 and only the seventh ever here. Other infrequently captured species included two Sharp-shinned Hawks, a Yellow-bellied Sapsucker, a Red-breasted Nuthatch, four White-breasted Nuthatches (a record), two Marsh Wrens, three Northern Parulas (all on the same day!), four Blackburnian Warblers, two Rose-breasted Grosbeaks, two Indigo Buntings, and an Eastern Towhee.

Details for all species captured this fall are shown in Table 6 below.

Interesting early and late records this fall included a late Sharp-shinned Hawk on 29 October, a record late Eastern Wood-Pewee on 9 October, a rather late Tennessee Warbler on 9 October, a somewhat late Orange-crowned Warbler on 23 October, a late Mourning Warbler on 22 September, early American Tree Sparrows on 23 October, and a late Lincoln's Sparrow on 29 October. Due to banding being conducted on 3 November, later than ever before, every species banded that day was by default a "record late", including resident Black-capped Chickadee, and migrant Brown Creeper, Winter Wren, Golden-crowned Kinglet, Hermit Thrush, American Tree Sparrow, Fox, Song, Swamp, White-throated, and White-crowned sparrows, and American Goldfinch. Very high or record numbers on single days included 7 Brown Creepers on 9 October, 10 Tennessee Warblers, 3 Northern Parulas, 31 Blackpoll Warblers, and 28 American Redstarts, all on 8 September, and 4 Palm Warblers on 25 September. Good to record sparrow days included 7 American Tree Sparrows on 3 November, 5 Fox Sparrows on 20 October, 35 Song Sparrows on 29 October, 6 Lincoln's Sparrows on two dates, 8 White-crowned Sparrows on three dates, and 59 American Goldfinches on 5 September.

Details of first and last dates, peak dates and peak numbers for all species can be found in Table 7 below.

CAPTURES BY HABITAT

Breaking down the captures by net groups shown in Table 2 below, on a per-net basis the Field Nets were clearly the most productive as has been the case since the beginning, followed by the Field Edge. The Upland Nets as a group were more productive than in recent years while the Swamp Nets were less productive.

Captures of Ruby-throated Hummingbird were mostly in the Field Edge and Willow Nets, where there was good growth of Jewelweed this fall. As expected, most sparrows were captured in the Field Nets, while thrushes were captured mostly in the Upland and Swamp Nets. Warblers were captured slightly more often in the Field Nets, but were rather evenly distributed among all the nets.

Captures by net group for selected species is shown in Table 3 below.

Table 2. Captures by net groups for all species.

Net Group	No. captured	% captured	% per net
Field (2.25 nets)	1277	58.0%	25.8%
Field Edge (1.0 net)	263	11.9%	11.9%
Willow (2.0 nets)	168	7.6%	3.8%
Upland (4.0 nets)	323	14.8%	3.7%
Swamp (4.0 nets)	170	7.7%	1.9%

Table 3. Captures by net group for selected species.

Species	Field	Field Edge	Willow	Upland	Swamp
Ruby-throated Hummingbird	14.0%	38.4%	37.2%	6.9%	3.5%
<i>Empidonax</i> Flycatchers	93.8%	-	6.2%	-	-
Brown Creeper	-	-	-	40.9%	59.1%
Golden-crowned Kinglet	1.3%	8.9%	10.1%	53.1%	26.6%
Ruby-crowned Kinglet	42.4%	6.1%	6.1%	36.4%	9.1%
Swainson's Thrush	16.0%	4.0%	8.0%	44.0%	28.0%
Hermit Thrush	7.0%	5.6%	11.3%	28.2%	47.9%
All thrushes (n=111)	12.6%	5.4%	9.0%	36.0%	36.9%
Nashville Warbler	45.0%	20.0%	15.0%	17.5%	2.5%
Tennessee Warbler	36.8%	-	10.5%	52.6%	-
Magnolia Warbler	12.9%	21.0%	17.7%	37.1%	11.3%
Yellow-rumped Warbler	63.6%	9.1%	3.0%	15.2%	9.1%
Black-throated Blue Warbler	3.9%	2.0%	13.8%	33.3%	47.0%
Blackpoll Warbler	21.3%	34.0%	12.8%	25.5%	6.4%
American Redstart	11.9%	16.7%	38.1%	30.9%	2.4%
Common Yellowthroat	85.0%	8.3%	5.0%	1.7%	-
All warblers (n=448)	36.6%	14.3%	14.5%	21.0%	13.5%
Lincoln's Sparrow	88.9%	5.6%	2.8%	2.8%	-
Swamp Sparrow	93.5%	3.9%	1.3%	1.3%	-
Song Sparrow	76.5%	12.9%	3.5%	6.5%	0.6%
White-throated Sparrow	60.9%	17.2%	6.9%	13.4%	1.6%
White-crowned Sparrow	69.8%	30.2%	-	-	-
All sparrows (n=743)	69.2%	15.9%	5.2%	8.7%	0.9%
American Goldfinch	98.6%	1.0%	-	0.2%	0.2%
ALL SPECIES (n=2201)	58.0%	11.9%	7.6%	14.8%	7.7%

AGE RATIOS

The ratios of adult to young birds captured is potentially biased by differential capture rates of age groups that may forage at different heights, with young birds foraging lower and being captured more often. But, these samples may also provide some insight to nesting success from one year to another. The age ratios for selected species is provided in Table 4 below.

Table 4. Age ratios for selected species banded, and all species combined. (Adult = AHY+SY+ASY).

Species	Adult	HY	U
Ruby-throated Hummingbird	17.4%	82.6%	-
Black-capped Chickadee	20.0%	80.0%	-
Golden-crowned Kinglet	16.4%	69.6%	13.9%
Ruby-crowned Kinglet	9.1%	87.9%	3.0%
Swainson's Thrush	8.0%	92.0%	-
Hermit Thrush	8.5%	91.5%	-
Magnolia Warbler	25.8%	74.2%	-
Yellow-rumped Warbler	21.2%	78.8%	-
Black-throated Blue Warbler	5.9%	94.1%	-
Blackpoll Warbler	12.8%	87.2%	-
Common Yellowthroat	13.3%	86.7%	-
Lincoln's Sparrow	2.8%	97.2%	-
Swamp Sparrow	11.7%	88.3%	-
Song Sparrow	12.4%	87.6%	-
White-crowned Sparrow	23.2%	76.7%	-
White-throated Sparrow	21.6%	78.4%	-
American Goldfinch	15.2%	84.8%	-
ALL SPECIES	15.0%	84.4%	0.5%

BREEDING EVIDENCE

This fall breeding evidence was detected in only 10 individuals of 5 species, of which three were represented by recently fledged juveniles and the remainder being adult females with receding brood patches. This compares with 37 individuals of 12 species detected with breeding evidence last fall (plus about 350 juveniles of 5 species). It is unclear what has caused this significant decline, though the near absence of juvenile Swamp Sparrows, Common Yellowthroats, American Robins, and Gray Catbirds might be relate to the tardiness of the *Phragmites* burn in late April, which may have forced these species to nest elsewhere this year.

Details can be found in Table 8 below.

RETURNS, RECAPTURES & FOREIGN RE-ENCOUNTERS

The overall number of recaptures this fall (238) was the second highest to date. The returns of 36 individuals from previous years and seasons are summarized in Table 5 below. Details of these returns can be found in Tables 9-13. The Location column (Loc) in each of these tables gives an idea of the movements or territory of these individuals.

Birds banded at Metro Beach are very infrequently encountered any significant distance away from the park, so any reports of these “foreign” re-encounters are very special. There is one such re-encounter to report.

- An American Goldfinch banded on 18 November 2007 as a HY-M in Dearborn, Wayne Co. by Julie Craves was recaptured as an ASY-M at Metro Beach on 18 August 2010 (about 27 miles NE of the banding site).

Another bird, a hatch-year female Black-throated Blue Warbler banded on 15 September 2010 (2550-22796) was found dead by a homeowner just outside the park (distance unknown) on 18 September 2010.

Table 5. Returns by year.

	Banded in Spring 2010	Banded in 2009	Banded in 2008	Banded in 2007	Banded in 2006	Banded in 2005	Banded in 2004
2005 Returns No. (species)	-	-	-	-	-	6 (3)	0 (0)
2006 Returns No. (species)	-	-	-	-	5 (4)	20 (9)	3 (3)
2007 Returns No. (species)	-	-	-	8 (4)	8 (5)	7 (4)	1 (1)
2008 Returns No. (species)	-	-	12 (6)	14 (7)	4 (4)	6 (3)	0 (0)
2009 Returns No. (species)	-	12 (8)	16 (7)	4 (3)	0 (0)	4 (4)	1 (1)
2010 Returns No. (species)	7 (5)	12 (6)	9 (3)	7 (4)	1 (1)	0 (0)	0 (0)

WEIGHT GAINS/LOSSES

One measure of the value of an area to migrant birds is the weight gain of those birds using the area. There is much variation from day to day, and year to year, with regard to how birds use an area, the condition they're in when they arrive, and how long they'll tend to use an area. In general, migration is more protracted in fall, so stopover durations are sometimes longer.

A total of 164 individuals of 19 species banded this fall were recaptured on subsequent days to document stopover duration and measure weight gains or losses. This is more individuals but the same number of species as last year.

Weight gains of 87 individuals averaged 7.0% while losses of 71 individuals averaged 4.9%. Changes of about 3% or less are likely within the range of daily variation for most species and may not be significant. The greatest weight gains included 18.1% in 41 days by a Song Sparrow, 31.0% in 51 days by a Song Sparrow, 15.3% in 28 days by a Song Sparrow, 15.7% in 20 days by a Swamp Sparrow, 19.8% in 17 days by a White-throated Sparrow, 27.6% in 7 days by a White-crowned Sparrow, 19.2% in 45 days by an American Goldfinch, 16.9% in 49 days by an American

Goldfinch, and 23.8% in 44 days by an American Goldfinch. Some equally significant weight losses were recorded, including 22.7% in 5 days by a Northern Waterthrush, and 15.3% in 6 days by an American Goldfinch.

Stopovers were recorded for 5 species and 16 individuals of Neotropical migrant warbler, Tennessee, Magnolia, Black-throated Blue, Ovenbird, Northern Waterthrush, and Common Yellowthroat. Duration of stopovers for these warblers, excluding the 7 Common Yellowthroats (which breeds in the area), ranged from 1 day by an Ovenbird to 6 days by a Black-throated Blue Warbler. Six showed weight gains while three showed weight losses. Only 7 Common Yellowthroats were recaptured, all hatch-year birds, which is only 1/3 the number recaptured last fall. Interestingly, none of the 47 Blackpoll Warblers banded was recaptured, perhaps suggesting that this species uses the area more for rest and shelter than for refueling. Song Sparrows, which also breed locally, provided recapture data for 20 individuals, about half of last year's fall total. The record number of Lincoln's Sparrows banded this fall generated recaptures of 4 individuals, more than any other year. Stopover durations ranged from 7-10 days, and all four gained weight ranging from 2.5-11.3%. Record numbers of White-throated Sparrows banded generated recaptures of 22 individuals (6% of the total banded). Their stopovers ranged from 4-17 days; 10 gained weight and 12 lost weight. Prior to this fall, only a single recapture had been recorded for White-crowned Sparrows, but due to record numbers banded this year, 11 individuals generated stopover data (25% of the total banded), ranging from 4-13 days; 7 gained weight (three significantly in short times), and 4 lost weight. By far the most numerous species recaptured was American Goldfinch, with 70 individuals (14% of the total banded). Stopovers ranged from 1 to 57 days, and averaged 12.5 days. Weight gains were noted in 35 goldfinches (average 7.4%), weight losses in 31 goldfinches (average 4.8%), and 4 remained the same.

Table 14 below provides details of weight gains and losses detected during Fall 2010.

It is clear that this small, and rather isolated patch of habitat at Metro Beach Metropark continues to be an important stopover and refueling (feeding) site for migrating birds, and an important area for breeding birds as well, although the increasing population of deer may increasingly be degrading the usefulness of the site for birds.

ACKNOWLEDGMENTS

I would like to thank the park superintendent, Jim Pershing, for giving us permission to band in the park, and drive our cars into a closed area. I would also like to thank the staff at the Metro Beach Nature Center for their continuing support, especially Julie Champion and including Chris Becher, Nick Dicresce, and Michele Serreyn.

A total of 25 volunteer banding assistants helped out this fall, donating a total of 64.5 assistant days (average 2.7 volunteers per day), and slightly more than 412 assistant hours (average 17.2 volunteer hours per day). Banding this fall simply could not have been done without the able assistance of these volunteers:

Thomas A. Schlack (14 days), Dave J. Lancaster (12 days), John Bieganowski (4 days), Mary C. Buchowski (4 days), Terri L. Chapdelaine (4 days), Melissa L. Brady (3 days), David Boon (2 days), Chris Goulart (2 days), Amanda Grimm (2 days), Thierry Lach (2 days), Michelle Serreyn (2 days), Jeff Silence (2 days), Mike Charlebois (1 day), Nancy L. Chartier (1 day), Karin N. Dietz (1 day), Lorie F. Dietz (1 day), Jean M. Gramlich (1 day), Kevin Hannay (1 day), Kathi McDonald (1 day), Jerry T. McHale (1 day), Aaron Potts (1 day), Judi G. Wade (1 day), Charlie Weaver (1 day), and Susan B. Wright (1 day), Andrea M. Charlebois (0.5 day).

Table 6. Birds banded at Metro Beach Metropark in Fall 2009, compared with 2008, and the 1990-1999 average. (**Bold** = first ever banded here, **Bold Italic** = first banded here in fall, ¹ = all time record, ² = tied all time record, ³ = fall record, ⁴ = tied fall record). **Bold red text** indicates significant declines, or significant missing species from the tally.

Species	1990-1999 Fall Avg.	2005-2009 Fall Avg.	Fall 2009	#/100 NH (2009)	Fall 2010	#/100 NH (2010)
Sharp-shinned Hawk	0.2 (0.02)	0.4 (0.03)	-	-	2²	0.11
Broad-winged Hawk	-	0.2 (0.01)	-	-	-	-
Virginia Rail	0.1 (0.01)	-	-	-	-	-
American Woodcock	-	0.2 (0.01)	-	-	-	-
Mourning Dove	0.1 (0.01)	-	-	-	1	0.06
Black-billed Cuckoo	0.5 (0.04)	-	-	-	-	-
Yellow-billed Cuckoo	0.1 (0.01)	-	-	-	-	-
Ruby-throated Hummingbird	-	69.4 (4.59)	64	3.63	86	4.84
Red-bellied Woodpecker	-	0.2 (0.01)	-	-	-	-
Yellow-bellied Sapsucker	0.5 (0.04)	0.4 (0.03)	1	0.06	1	0.06
Downy Woodpecker	4.5 (0.38)	8.6 (0.57)	10	0.57	4	0.23
Hairy Woodpecker	0.2 (0.02)	0.2 (0.01)	-	-	-	-
Northern Flicker	0.7 (0.06)	2.4 (0.16)	3	0.17	2	0.11
Olive-sided Flycatcher	-	0.2 (0.01)	1	0.06	-	-
Eastern Wood-Pewee	1.5 (0.13)	3.0 (0.20)	5	0.28	3	0.17
Yellow-bellied Flycatcher	6.9 (0.59)	4.0 (0.26)	10	0.57	2	0.11
Acadian Flycatcher	0.5 (0.05)	-	-	-	-	-
Alder Flycatcher	-	1.0 (0.07)	4³	0.23	1	0.06
Willow Flycatcher	-	2.2 (0.15)	8¹	0.45	4	0.23
“Traill’s” Flycatcher	1.1 (0.09)	4.6 (0.30)	11³	0.62	6	0.34
Least Flycatcher	2.6 (0.22)	7.4 (0.49)	22³	1.25	3	0.17
Eastern Phoebe	0.9 (0.08)	3.0 (0.20)	5⁴	0.28	-	-
Great Crested Flycatcher	1.2 (0.10)	-	-	-	-	-
Blue-headed Vireo	2.5 (0.22)	4.4 (0.29)	5	0.28	2	0.11
Warbling Vireo	3.0 (0.26)	3.0 (0.20)	9	0.51	1	0.06
Philadelphia Vireo	4.0 (0.34)	0.4 (0.03)	1	0.06	1	0.06
Red-eyed Vireo	10.2 (0.87)	4.4 (0.29)	9	0.51	6	0.34
Blue Jay	4.5 (0.39)	3.8 (0.25)	1	0.06	22³	1.24
<i>Northern Rough-winged Swallow</i>	-	-	-	-	1	0.06
Barn Swallow	-	0.4 (0.03)	-	-	-	-
Black-capped Chickadee	11.4 (0.97)	11.6 (0.77)	12	0.68	25¹	1.41
Tufted Titmouse	0.6 (0.05)	1.0 (0.07)	-	-	-	-
Red-breasted Nuthatch	0.4 (0.03)	1.0 (0.07)	1	0.06	1	0.06
White-breasted Nuthatch	0.2 (0.02)	0.6 (0.04)	-	-	4¹	0.23
Brown Creeper	5.4 (0.46)	15.0 (0.99)	13	0.74	22¹	1.24
Carolina Wren	0.8 (0.07)	2.0 (0.13)	-	-	-	-
House Wren	3.9 (0.33)	17.4 (1.15)	27¹	1.53	29¹	1.63
Winter Wren	6.2 (0.53)	15.6 (1.03)	21	1.19	12	0.68

Table 6. Cont'd. (page 2 of 3)

Species	1990-1999 Fall Avg.	2004-2009 Fall Avg.	Fall 2009	#/100 NH (2009)	Fall 2010	#/100 NH (2010)
Marsh Wren	9.5 (0.81)	4.2 (0.28)	5	0.28	2	0.11
Golden-crowned Kinglet	38.6 (3.29)	63.8 (4.22)	64	3.63	79	4.45
Ruby-crowned Kinglet	35.6 (3.03)	56.0 (3.70)	64	3.63	33	1.86
Blue-gray Gnatcatcher	0.1 (0.01)	-	-	-	1	0.06
Veery	3.9 (0.33)	2.4 (0.16)	2	0.11	-	-
Gray-cheeked Thrush	11.2 (0.95)	14.8 (0.98)	14	0.79	7	0.39
Swainson's Thrush	43.9 (3.74)	40.6 (2.69)	53	3.00	25	1.41
Hermit Thrush	25.7 (2.19)	84.2 (5.57)	109	6.17	71	4.00
Wood Thrush	1.4 (0.12)	1.6 (0.11)	1	0.06	-	-
American Robin	2.9 (0.25)	33.8 (2.24)	62¹	3.51	8	0.45
Gray Catbird	21.6 (1.84)	20.6 (1.36)	29	1.64	8	0.45
Brown Thrasher	0.1 (0.01)	0.2 (0.01)	-	-	-	-
European Starling	-	1.2 (0.08)	-	-	-	-
Cedar Waxwing	7.4 (0.63)	9.6 (0.64)	39¹	2.21	-	-
Blue-winged Warbler	-	0.2 (0.01)	-	-	-	-
Golden-winged Warbler	0.4 (0.03)	-	-	-	-	-
Tennessee Warbler	4.7 (0.40)	10.2 (0.67)	7	0.40	19¹	1.07
Orange-crowned Warbler	1.0 (0.09)	6.8 (0.45)	8	0.45	5	0.28
Nashville Warbler	8.5 (0.73)	39.8 (2.63)	46	2.61	40	2.25
Northern Parula	0.5 (0.05)	1.0 (0.07)	4¹	0.23	3	0.17
Yellow Warbler	2.4 (0.20)	22.6 (1.50)	28	1.59	11	0.62
Chestnut-sided Warbler	8.3 (0.70)	9.8 (0.65)	8	0.45	9	0.51
Magnolia Warbler	78.0 (6.64)	37.6 (2.49)	32	1.81	62	3.49
Cape May Warbler	0.8 (0.07)	-	-	-	2	0.11
Black-throated Blue Warbler	15.5 (1.32)	36.6 (2.42)	40	2.27	51¹	2.87
Yellow-rumped Warbler	11.1 (0.94)	3.6 (0.24)	7	0.40	33	1.86
Black-throated Green Warbler	1.2 (0.10)	1.2 (0.08)	3	0.17	-	-
Blackburnian Warbler	1.0 (0.09)	1.2 (0.08)	1	0.06	4²	0.23
(Western) Palm Warbler	0.5 (0.05)	1.6 (0.11)	4²	0.23	12¹	0.68
Bay-breasted Warbler	6.1 (0.52)	6.0 (0.40)	2	0.11	3	0.17
Blackpoll Warbler	11.7 (1.00)	3.4 (0.22)	6	0.34	47¹	2.65
Black-and-white Warbler	9.5 (0.81)	5.8 (0.38)	4	0.23	7	0.39
American Redstart	41.6 (3.54)	12.0 (0.79)	9	0.51	42	2.36
Prothonotary Warbler	0.1 (0.01)	-	-	-	-	-
Ovenbird	7.9 (0.67)	16.0 (1.06)	14	0.79	14	0.79
Northern Waterthrush	9.4 (0.80)	8.8 (0.58)	10	0.57	14	0.79
Connecticut Warbler	0.5 (0.05)	0.6 (0.04)	-	-	1	0.06
Mourning Warbler	2.7 (0.23)	6.4 (0.42)	10³	0.57	3	0.17
Common Yellowthroat	16.9 (1.44)	59.2 (3.92)	81	4.59	60	3.38
Wilson's Warbler	13.7 (1.17)	19.6 (1.30)	26	1.47	12	0.68

Table 6. Cont'd. (page 3 of 3)

Species	1990-1999 Fall Avg.	2004-2009 Fall Avg.	Fall 2009	#/100 NH (2009)	Fall 2010	#/100 NH (2010)
Canada Warbler	5.5 (0.46)	8.2 (0.54)	5	0.28	4	0.23
Hooded Warbler	-	0.2 (0.01)	-	-	-	-
Yellow-breasted Chat	0.1 (0.01)	0.2 (0.01)	-	-	-	-
Scarlet Tanager	0.1 (0.01)	-	-	-	-	-
Northern Cardinal	6.1 (0.52)	19.8 (1.31)	8	0.45	7	0.39
Rose-breasted Grosbeak	2.3 (0.19)	1.2 (0.08)	2	0.11	2	0.11
Indigo Bunting	0.3 (0.02)	1.0 (0.07)	2³	0.11	2⁴	0.11
Eastern Towhee	-	0.8 (0.05)	1	0.06	1	0.06
American Tree Sparrow	-	1.6 (0.11)	3	0.17	12¹	0.68
Chipping Sparrow	-	0.2 (0.01)	-	-	-	-
Field Sparrow	0.2 (0.02)	0.2 (0.01)	-	-	1	0.06
Fox Sparrow	1.7 (0.15)	6.6 (0.44)	2	0.11	19¹	1.07
Song Sparrow	46.7 (3.98)	117.6 (7.78)	141	7.99	170	9.57
Lincoln's Sparrow	1.5 (0.13)	7.0 (0.46)	15³	0.85	36¹	2.03
Swamp Sparrow	16.8 (1.43)	64.8 (4.29)	114	6.51	77	4.33
White-throated Sparrow	56.7 (4.83)	195.4 (12.93)	160	9.06	379¹	21.33
White-crowned Sparrow	1.8 (0.15)	7.0 (0.46)	7	0.40	43¹	2.42
Dark-eyed Junco	1.1 (0.09)	3.6 (0.24)	9¹	0.51	6	0.21
Red-winged Blackbird	1.1 (0.09)	10.4 (0.69)	17	0.96	1	0.06
Common Grackle	0.2 (0.02)	1.2 (0.08)	3⁴	0.17	-	-
Brown-headed Cowbird	0.1 (0.01)	0.2 (0.01)	-	-	-	-
Orchard Oriole	-	0.2 (0.01)	-	-	-	-
Baltimore Oriole	-	4.4 (0.29)	8	0.45	-	-
Purple Finch	0.1 (0.01)	0.2 (0.01)	-	-	-	-
House Finch	3.7 (0.32)	0.6 (0.04)	-	-	-	-
Common Redpoll	0.1 (0.01)	-	-	-	-	-
American Goldfinch	3.2 (0.27)	76.6 (5.07)	107	6.06	512¹	28.82

Table 7. Birds banded at Metro Beach Metropark in Fall 2010, earliest, latest, and peak numbers. Unusual species, dates, or numbers are boldfaced.

Species	Earliest Date	Latest Date	Peak No.	Peak Date
Sharp-shinned Hawk	29-Sep-10	29-Oct-10	1	2 dates
Broad-winged Hawk	-	-	-	-
Virginia Rail	-	-	-	-
American Woodcock	-	-	-	-
Mourning Dove	13-Oct-10	13-Oct-10	1	13-Oct-10
Black-billed Cuckoo	-	-	-	-
Yellow-billed Cuckoo	-	-	-	-
Ruby-throated Hummingbird	14-Aug-10	29-Sep-10	13	05-Sep-10
Red-bellied Woodpecker	-	-	-	-
Yellow-bellied Sapsucker	25-Sep-10	25-Sep-10	1	25-Sep-10
Downy Woodpecker	25-Sep-10	29-Oct-10	2	29-Oct-10
Hairy Woodpecker	-	-	-	-
Northern Flicker	18-Aug-10	15-Sep-10	1	2 dates
Olive-sided Flycatcher	-	-	-	-
Eastern Wood-Pewee	28-Aug-10	09-Oct-10	1	3 dates
Yellow-bellied Flycatcher	31-Aug-10	02-Sep-10	1	2 dates
Acadian Flycatcher	-	-	-	-
Alder Flycatcher	14-Aug-10	18-Aug-10	1	Both dates
Willow Flycatcher	28-Aug-10	08-Sep-10	2	31-Aug-10
“Traill’s” Flycatcher	18-Aug-10	02-Sep-10	3	18-Aug-10
Least Flycatcher	18-Aug-10	08-Sep-10	1	3 dates
Eastern Phoebe	-	-	-	-
Great Crested Flycatcher	-	-	-	-
Blue-headed Vireo	15-Sep-10	09-Oct-10	1	2 dates
Warbling Vireo	02-Sep-10	02-Sep-10	1	02-Sep-10
Philadelphia Vireo	08-Sep-10	08-Sep-10	1	08-Sep-10
Red-eyed Vireo	27-Aug-10	07-Oct-10	2	08-Sep-10
Blue Jay	07-Oct-10	09-Oct-10	21	09-Oct-10
Northern Rough-winged Swallow	07-Oct-10	07-Oct-10	1	07-Oct-10
Barn Swallow	-	-	-	-
Black-capped Chickadee	18-Aug-10	03-Nov-10	4	18-Aug-10
Tufted Titmouse	-	-	-	-
Red-breasted Nuthatch	25-Sep-10	25-Sep-10	1	25-Sep-10
White-breasted Nuthatch	08-Sep-10	07-Oct-10	2	08-Sep-10
Brown Creeper	25-Sep-10	03-Nov-10	7	09-Oct-10
Carolina Wren	-	-	-	-
House Wren	18-Aug-10	13-Oct-10	5	25-Sep-10
Winter Wren	24-Sep-10	03-Nov-10	3	13-Oct-10
Marsh Wren	28-Aug-10	31-Aug-10	1	2 dates

Table 7. Cont'd. (page 2 of 3)

Species	Earliest Date	Latest Date	Peak No.	Peak Date
Golden-crowned Kinglet	25-Sep-10	03-Nov-10	23	09-Oct-10
Ruby-crowned Kinglet	22-Sep-10	20-Oct-10	8	09-Oct-10
Blue-gray Gnatcatcher	08-Sep-10	08-Sep-10	1	08-Sep-10
Veery	-	-	-	-
Gray-cheeked Thrush	15-Sep-10	24-Sep-10	3	15-Sep-10
Swainson's Thrush	31-Aug-10	29-Sep-10	12	15-Sep-10
Hermit Thrush	25-Sep-10	03-Nov-10	20	09-Oct-10
Wood Thrush	-	-	-	-
American Robin	07-Aug-10	29-Oct-10	5	14-Aug-10
Gray Catbird	02-Sep-10	29-Sep-10	3	24-Sep-10
Brown Thrasher	-	-	-	-
European Starling	-	-	-	-
Cedar Waxwing	-	-	-	-
Blue-winged Warbler	-	-	-	-
Golden-winged Warbler	-	-	-	-
Tennessee Warbler	18-Aug-10	09-Oct-10	10	08-Sep-10
Orange-crowned Warbler	25-Sep-10	23-Oct-10	1	5 dates
Nashville Warbler	27-Aug-10	09-Oct-10	10	15-Sep-10
Northern Parula	08-Sep-10	08-Sep-10	3	08-Sep-10
Yellow Warbler	07-Aug-10	28-Aug-10	5	18-Aug-10
Chestnut-sided Warbler	18-Aug-10	15-Sep-10	4	08-Sep-10
Magnolia Warbler	18-Aug-10	09-Oct-10	16	25-Sep-10
Cape May Warbler	31-Aug-10	05-Sep-10	1	2 dates
Black-throated Blue Warbler	27-Aug-10	13-Oct-10	16	25-Sep-10
Yellow-rumped Warbler	15-Sep-10	29-Oct-10	12	07-Oct-10
Black-throated Green Warbler	-	-	-	-
Blackburnian Warbler	18-Aug-10	08-Sep-10	2	18-Aug-10
(Western) Palm Warbler	08-Sep-10	07-Oct-10	4	25-Sep-10
Bay-breasted Warbler	05-Sep-10	08-Sep-10	2	08-Sep-10
Blackpoll Warbler	05-Sep-10	14-Oct-10	31	08-Sep-10
Black-and-white Warbler	05-Sep-10	08-Sep-10	6	08-Sep-10
American Redstart	27-Aug-10	25-Sep-10	28	08-Sep-10
Prothonotary Warbler	-	-	-	-
Ovenbird	18-Aug-10	25-Sep-10	5	25-Sep-10
Northern Waterthrush	14-Aug-10	25-Sep-10	3	28-Aug-10
Connecticut Warbler	28-Aug-10	28-Aug-10	1	28-Aug-10
Mourning Warbler	18-Aug-10	22-Sep-10	2	18-Aug-10
Common Yellowthroat	07-Aug-10	13-Oct-10	10	05-Sep-10
Wilson's Warbler	18-Aug-10	15-Sep-10	4	08-Sep-10
Canada Warbler	14-Aug-10	31-Aug-10	2	31-Aug-10

Table 7. Cont'd. (page 3 of 3)

Species	Earliest Date	Latest Date	Peak No.	Peak Date
Hooded Warbler	-	-	-	-
Yellow-breasted Chat	-	-	-	-
Scarlet Tanager	-	-	-	-
Northern Cardinal	27-Aug-10	20-Oct-10	2	20-Oct-10
Rose-breasted Grosbeak	28-Aug-10	15-Sep-10	1	2 dates
Indigo Bunting	25-Sep-10	25-Sep-10	2	25-Sep-10
Eastern Towhee	14-Oct-10	14-Oct-10	1	14-Oct-10
American Tree Sparrow	23-Oct-10	03-Nov-10	7	03-Nov-10
Chipping Sparrow	-	-	-	-
Field Sparrow	29-Oct-10	29-Oct-10	1	29-Oct-10
Fox Sparrow	13-Oct-10	03-Nov-10	5	20-Oct-10
Song Sparrow	14-Aug-10	03-Nov-10	35	29-Oct-10
Lincoln's Sparrow	15-Sep-10	29-Oct-10	6	2 dates
Swamp Sparrow	07-Aug-10	03-Nov-10	13	29-Sep-10
White-throated Sparrow	15-Sep-09	03-Nov-09	60	09-Oct-10
White-crowned Sparrow	29-Sep-09	03-Nov-09	8	3 dates
Dark-eyed Junco	09-Oct-10	29-Oct-10	3	2 dates
Red-winged Blackbird	15-Sep-10	15-Sep-10	1	15-Sep-10
Common Grackle	-	-	-	-
Brown-headed Cowbird	-	-	-	-
Orchard Oriole	-	-	-	-
Baltimore Oriole	-	-	-	-
Purple Finch	-	-	-	-
House Finch	-	-	-	-
Common Redpoll	-	-	-	-
American Goldfinch	14-Aug-10	03-Nov-10	59	05-Sep-10

Table 8. Breeding Evidence of Birds captured at Metro Beach Metropark in Fall 2010
(BP=Brood Patch, CP=Cloacal Protuberance, 1=min., 3=max., 4=diminishing)

Species	Age/Sex	Band No.	Date Banded	Dates Recaptured	Breeding Evidence Observed
Willow Flycatcher	HY-U	2610-05108	28-Aug-10	31-Aug-10 05-Sep-10 08-Sep-10	Juv.
Willow Flycatcher	HY-U	2610-05109	31-Aug-10	02-Sep-10 05-Sep-10 08-Sep-10	Juv.
House Wren	AHY-F	2560-75074	02-Aug-09	18-Aug-10	BP=4
Common Yellowthroat	AHY-F	2610-05069	07-Aug-10	-	BP=3
Song Sparrow	AHY-F	2431-38080	06-Jun-09	18-Aug-10	BP=4
Song Sparrow	AHY-F	2431-38269	25-Sep-09	18-Aug-10 27-Aug-10 05-Sep-10	BP=4
American Goldfinch	HY-F	2401-00933	18-Aug-10	-	Juv.
American Goldfinch	AHY-F	2401-44568	02-Sep-10	-	BP=4
American Goldfinch	AHY-F	2401-44570	02-Sep-10	-	BP=4
American Goldfinch	AHY-F	2401-44799	22-Sep-10	-	BP=4

Table 9. Returns from 2006

Species	Band No.	Date Banded	Age/Sex	Date Recap.	Age/Sex	Loc *
Common Yellowthroat	2360-86493	16-Sep-06	HY-M	29-Sep-10	5Y-M	U

* F=Field, FE=Field Edge, W=Willow, SW=Swamp, U=Upland.

Table 10. Returns from 2007

Species	Band No.	Date Banded	Age/Sex	Date Recap.	Age/Sex	Loc *
Black-capped Chickadee	2360-85770	09-Sep-07	HY-U	(03-Apr-10) (10-Apr-10) (13-Apr-10) (14-May-10) 29-Oct-10 03-Nov-10	4Y-U 4Y-F 4Y-U	FE FE SW W SW FE
American Robin	1222-43050	31-May-07	AHY-F	05-Sep-10	A4Y-M	SW
Common Yellowthroat	2360-85743	31-Aug-07	AHY-M	22-Sep-10	A4Y-M	F
American Goldfinch	1601-24780	20-Apr-07	SY-F	31-Aug-10 02-Sep-10	5Y-F	F F
American Goldfinch	2311-28875	29-Jul-07	ASY-M	18-Aug-10	A5Y-M	F
American Goldfinch	2311-28877	16-Aug-07	SY-M	05-Sep-10	5Y-M	F
American Goldfinch	2311-28890	31-Aug-07	HY-F	(10-Apr-10) 27-Aug-10	4Y-F	F F

* F=Field, FE=Field Edge, W=Willow, SW=Swamp, U=Upland.

Table 11. Returns from 2008

Species	Band No.	Date Banded	Age/Sex	Date Recap.	Age/Sex	Loc *
Black-capped Chickadee	2360-85846	24-Apr-08	AHY-U	(09-Apr-10) 25-Sep-10	A3Y-F	SW W
Song Sparrow	2281-10726	09-Aug-08	HY-U	(15-May-10) 18-Aug-10	3Y-M	F FE
Song Sparrow	2291-90938	16-Oct-08	HY-U	14-Aug-10	3Y-U	F
American Goldfinch	2311-71575	06-Apr-08	ASY-M	31-Aug-10	A4Y-M	F
American Goldfinch	2311-71583	16-Apr-08	SY-F	28-Aug-10	4Y-F	F
American Goldfinch	2311-71595	18-Apr-08	SY-F	15-Sep-10	4Y-F	F
American Goldfinch	2311-71631	05-May-08	ASY-M	03-Nov-10	A4Y-M	F
American Goldfinch	2321-69532	28-Sep-08	HY-F	02-Sep-10	3Y-F	F
American Goldfinch	2321-69637	02-Oct-08	AHY-F	28-Aug-10	A3Y-F	F

* F=Field, FE=Field Edge, W=Willow, SW=Swamp, U=Upland.

Table 12. Returns from 2009

Species	Band No.	Date Banded	Age/Sex	Date Recap.	Age/Sex	Loc *
Black-capped Chickadee	2560-75115	13-Aug-09	AHY-U	(24-Apr-10) 09-Oct-10	A2Y-U	U U
House Wren	2560-75074	02-Aug-09	AHY-F	18-Aug-10	A2Y-F	U
Gray Catbird	2231-53442	23-May-09	ASY-M	25-Sep-10	A3Y-M	F
Common Yellowthroat	2540-26667	08-May-09	AHY-M	14-Aug-10	A2Y-M	F
Common Yellowthroat	2560-75114	13-Aug-09	HY-U	22-Sep-10	2Y-M	F
Song Sparrow	2431-38080	06-Jun-09	AHY-F	(13-Apr-10) (28-May-10) 18-Aug-10	A2Y-F	FE F F
Song Sparrow	2431-38269	25-Sep-09	HY-U	(16-Apr-10) 18-Aug-10 27-Aug-10 05-Sep-10	2Y-F	FE FE W U
Song Sparrow	2431-38351	26-Sep-09	HY-U	(20-May-10) 20-Oct-10	2Y-M	U FE
American Goldfinch	2391-16012	05-Apr-09	SY-M	(14-May-10) 18-Aug-10	3Y-M	U F
American Goldfinch	2391-16042	17-Apr-09	SY-M	27-Aug-10	3Y-M	F
American Goldfinch	2391-16165	23-May-09	SY-F	22-Sep-10	3Y-F	F
American Goldfinch	2401-00522	14-Oct-09	HY-M	28-Aug-10	2Y-M	F

* F=Field, FE=Field Edge, W=Willow, SW=Swamp, U=Upland.

Table 13. Returns from spring 2010

Species	Band No.	Date Banded	Age/Sex	Date Recap.	Age/Sex	Loc *
Black-capped Chickadee	2560-75365	09-Apr-10	SY-U	28-Aug-10	2Y-U	F
House Wren	2610-05025	20-May-10	AHY-F	05-Sep-10	AHY-F	FE
House Wren	2610-05029	20-May-10	AHY-M	27-Aug-10	AHY-M	W
Yellow Warbler	2560-75486	14-May-10	SY-F	18-Aug-10	2Y-F	F
Northern Cardinal	1292-72538	10-Apr-10	SY-M	09-Oct-10	2Y-M	SW
American Goldfinch	2401-00768	09-Apr-10	SY-F	03-Nov-10	2Y-F	SW
American Goldfinch	2401-00811	23-Apr-10	SY-F	18-Sep-10	2Y-F	F

* F=Field, FE=Field Edge, W=Willow, SW=Swamp, U=Upland.

Table 14. Same Season Recaptures (with weight gain or loss noted), migrants only.
(**Bold Ital**=Neotropical Migrant, **Bold**=Migrant)

Species	Band No.	Age/Sex	Date Banded	Date Recaptured	No. of days	Original Weight	Weight at Recapture (g)	Gain/Loss (g)	Gain/Loss (%)
<i>Ruby-throated Hummingbird</i>	L-14932	HY-F	02-Sep-10	05-Sep-10	3	3.4	3.3	-0.1	-3.0%
<i>Alder Flycatcher</i>	2610-05071	HY-U	14-Aug-10	18-Aug-10	4	13.1	13.4	-0.3	-2.3%
<i>Willow Flycatcher</i>	2610-05108	HY-U	28-Aug-10	31-Aug-10 05-Sep-10 08-Sep-10	8 8 11	14.0 12.1 11.5	12.1 11.5 12.8	-1.2	-8.6%
<i>Willow Flycatcher</i>	2610-05109	HY-U	31-Aug-10	02-Sep-10 05-Sep-10 08-Sep-10	2 5 8	14.0 12.8 12.8	12.8 12.8 12.6	-1.4	-10.0%
<i>Willow Flycatcher</i>	2610-05112	HY-U	31-Aug-10	02-Sep-10 05-Sep-10	2 5	13.1 12.2	13.2 12.2	-0.9	-6.9%
<i>House Wren</i>	2610-05101	HY-U	27-Aug-10	05-Sep-10 29-Sep-10	9 33	11.0 10.5	10.5 11.7	+0.7	+6.4%
<i>House Wren</i>	2610-05133	HY-U	02-Sep-10	25-Sep-10 29-Sep-10	23 27	11.2 12.0	12.0 11.2	0	0%
<i>House Wren</i>	2610-05149	HY-U	05-Sep-10	22-Sep-10 25-Sep-10	17 20	11.1 11.1	11.1 11.3	+0.2	+1.8%
<i>House Wren</i>	2610-05200	HY-U	11-Sep-10	15-Sep-10 22-Sep-10	4 11	10.3 9.8	9.8 10.5	+0.2	+1.9%
<i>House Wren</i>	2610-05220	HY-U	15-Sep-10	22-Sep-10 24-Sep-10 07-Oct-10	7 9 22	11.1 11.4 11.6	11.4 11.6 11.6	+0.5	+4.5%
<i>Golden-crowned Kinglet</i>	2620-66140	HY-M	07-Oct-10	09-Oct-10	2	6.5	6.6	+0.1	+1.5%
<i>Hermit Thrush</i>	2541-21326	HY-U	07-Oct-10	09-Oct-10	2	30.6	30.5	-0.1	-0.3%
<i>Hermit Thrush</i>	2541-21398	HY-U	07-Oct-10	09-Oct-10 13-Oct-10	2 6	28.6 30.1	30.1 30.1	+1.5	+5.2%
<i>Hermit Thrush</i>	2541-21517	HY-U	13-Oct-10	14-Oct-10	1	31.2	30.7	-0.5	-1.6%
<i>American Robin</i>	1292-72622	HY-U	14-Aug-10	18-Aug-10	4	73.7	68.0	-5.7	-7.7%
<i>Tennessee Warbler</i>	2620-66133	HY-U	07-Oct-10	09-Oct-10	2	9.1	9.3	+0.2	+2.2%
<i>Magnolia Warbler</i>	2550-22684	HY-U	05-Sep-10	08-Sep-10	3	8.0	7.6	-0.4	-5.0%
<i>Magnolia Warbler</i>	2620-66023	HY-U	25-Sep-10	29-Sep-10	4	8.7	9.2	+0.5	+5.7%
<i>Black-throated Blue Warbler</i>	2620-66020	HY-F	25-Sep-10	29-Sep-10	4	9.4	9.6	+0.2	+2.1%
<i>Black-throated Blue Warbler</i>	2620-66068	HY-F	25-Sep-10	29-Sep-10	4	10.6	10.8	+0.2	+1.9%
<i>Black-throated Blue Warbler</i>	2620-66135	HY-F	07-Oct-10	13-Oct-10	6	9.4	9.7	+0.3	+3.2%
<i>Ovenbird</i>	2401-00981	HY-U	27-Aug-10	28-Aug-10	1	18.6	18.5	-0.1	-0.5%
<i>Ovenbird</i>	2401-44542	HY-U	31-Aug-10	02-Sep-10	2	21.9	22.7	+0.8	+3.6%
<i>Northern Waterthrush</i>	2401-44541	HY-U	31-Aug-10	05-Sep-10	5	19.8	15.3	-4.5	-22.7%
<i>Common Yellowthroat</i>	2610-05074	HY-M	14-Aug-10	18-Sep-10	35	10.4	10.3	-0.1	-1.0%
<i>Common Yellowthroat</i>	2610-05075	HY-M	14-Aug-10	05-Sep-10	22	10.6	10.6	0	0%
<i>Common Yellowthroat</i>	2610-05105	HY-U	28-Aug-10	15-Sep-10	18	10.2	10.6	+0.4	+3.9%
<i>Common Yellowthroat</i>	2610-05128	HY-M	02-Sep-10	05-Sep-10	3	11.5	12.4	+0.9	+7.8%
<i>Common Yellowthroat</i>	2610-05151	HY-M	08-Sep-10	15-Sep-10	7	11.0	10.9	-0.1	-0.9%
<i>Common Yellowthroat</i>	2610-05205	HY-M	15-Sep-10	22-Sep-10	7	10.2	11.2	+1.0	+9.8%
<i>Common Yellowthroat</i>	2610-05206	HY-U	15-Sep-10	25-Sep-10	10	9.7	10.4	+0.7	+7.2%

Table 14. Cont'd. (page 2 of 5)

Species	Band No.	Age/Sex	Date Banded	Date Recaptured	No. of days	Original Weight	Weight at Recapture (g)	Gain/Loss (g)	Gain/Loss (%)
Song Sparrow	2431-38791	HY-U	14-Aug-10	09-Oct-10 13-Oct-10	56 60	18.6 20.7	20.7 20.2	+1.6	+8.6%
Song Sparrow	2431-38792	HY-U	14-Aug-10	27-Aug-10	13	16.5	17.2	+0.7	+4.2%
Song Sparrow	2431-38803	HY-U	27-Aug-10	02-Sep-10	6	20.3	19.7	-0.6	-2.9%
Song Sparrow	2431-38804	HY-U	27-Aug-10	31-Aug-10	4	18.2	17.6	-0.6	-3.3%
Song Sparrow	2431-38805	HY-U	27-Aug-10	05-Sep-10 08-Sep-10	9 12	19.8 19.2	19.2 20.2	+0.4	+2.0%
Song Sparrow	2431-38806	HY-U	27-Aug-10	08-Sep-10	12	20.1	18.8	-0.3	-1.5%
Song Sparrow	2431-38808	HY-U	28-Aug-10	31-Aug-10	3	16.4	15.9	-0.5	-3.0%
Song Sparrow	2431-38816	HY-U	02-Sep-10	13-Oct-10	41	18.2	21.5	+3.3	+18.1%
Song Sparrow	2431-38823	HY-U	08-Sep-10	15-Sep-10 29-Oct-10	7 51	17.1 18.4	18.4 22.4	+5.3	+31.0%
Song Sparrow	2431-38827	HY-U	08-Sep-10	29-Sep-10	21	16.6	18.6	+2.0	+12.0%
Song Sparrow	2431-38838	HY-U	15-Sep-10	14-Oct-10	29	18.3	20.0	+1.7	+9.3%
Song Sparrow	2431-38842	HY-U	15-Sep-10	22-Sep-10 13-Oct-10	7 28	17.6 18.3	18.3 20.3	+2.7	+15.3%
Song Sparrow	2431-38864	HY-U	15-Sep-10	18-Sep-10	3	19.7	19.1	-0.6	-3.0%
Song Sparrow	2431-38873	HY-U	18-Sep-10	14-Oct-10	26	21.5	22.5	+1.0	+4.6%
Song Sparrow	2431-38895	HY-U	22-Sep-10	14-Oct-10	22	20.9	21.1	+0.2	+0.9%
Song Sparrow	2431-38909	AHY-U	22-Sep-10	29-Sep-10	7	22.0	20.2	-1.8	-8.2%
Song Sparrow	2431-38952	AHY-U	25-Sep-10	29-Sep-10	4	21.5	20.8	-0.7	-3.2%
Song Sparrow	2541-21304	HY-U	29-Sep-10	13-Oct-10	14	19.1	18.7	-0.4	-2.1%
Song Sparrow	2541-21507	HY-U	09-Oct-10	29-Oct-10	20	19.7	20.1	+0.4	+2.0%
Song Sparrow	2541-21631	HY-U	20-Oct-10	03-Nov-10	14	19.4	19.7	+0.3	+1.4%
Lincoln's Sparrow	2401-44703	HY-U	15-Sep-10	22-Sep-10 24-Sep-10	7 9	14.8 16.0	16.1 16.0	+1.2	+8.1%
Lincoln's Sparrow	2401-44732	HY-U	15-Sep-10	25-Sep-10	10	14.4	15.3	+0.9	+6.2%
Lincoln's Sparrow	2401-44785	HY-U	22-Sep-10	29-Sep-10	7	15.9	16.3	+0.4	+2.5%
Lincoln's Sparrow	2401-44865	HY-U	29-Sep-10	07-Oct-10	8	16.8	18.7	+1.9	+11.3%
Swamp Sparrow	2401-44883	HY-U	29-Sep-10	14-Oct-10	15	16.7	16.9	+0.2	+1.2%
Swamp Sparrow	2401-44886	HY-U	29-Sep-10	07-Oct-10	8	15.2	15.8	+0.6	+3.9%
Swamp Sparrow	2401-44903	HY-U	07-Oct-10	14-Oct-10	7	15.3	15.2	-0.1	-0.6%
Swamp Sparrow	2401-44907	HY-U	07-Oct-10	14-Oct-10	7	16.2	16.9	+0.7	+4.3%
Swamp Sparrow	2401-44918	HY-U	07-Oct-10	14-Oct-10	7	17.0	16.4	-0.6	-3.5%
Swamp Sparrow	2401-44933	HY-U	09-Oct-10	29-Oct-10	20	13.4	15.5	+2.1	+15.7%
White-throated Sparrow	2431-38866	HY-U	18-Sep-10	22-Sep-10	4	21.1	21.4	+0.3	+1.4%
White-throated Sparrow	2431-38867	HY-U	18-Sep-10	22-Sep-10	4	26.5	23.5	-3.0	-11.3%
White-throated Sparrow	2431-38877	HY-U	18-Sep-10	22-Sep-10	4	22.9	23.8	+0.9	+3.9%
White-throated Sparrow	2431-38913	HY-F	22-Sep-10	09-Oct-10	17	22.2	26.6	+4.4	+19.8%
White-throated Sparrow	2431-38980	HY-U	29-Sep-10	13-Oct-10	14	22.4	23.7	+1.3	+5.8%
White-throated Sparrow	2541-21381	HY-U	07-Oct-10	13-Oct-10	6	27.3	25.2	-1.9	-7.0%
White-throated Sparrow	2541-21384	HY-U	07-Oct-10	13-Oct-10	6	24.5	25.1	+0.6	+2.4%
White-throated Sparrow	2541-21386	HY-U	07-Oct-10	14-Oct-10	7	27.4	24.4	-3.0	-10.9%
White-throated Sparrow	2541-21409	HY-U	09-Oct-10	23-Oct-10	14	27.6	26.5	-0.9	-3.3%
White-throated Sparrow	2541-21412	HY-U	09-Oct-10	13-Oct-10	4	27.3	27.2	-0.1	-0.4%
White-throated Sparrow	2541-21463	AHY-U	09-Oct-10	13-Oct-10	4	23.8	22.7	-0.9	-3.8%
White-throated Sparrow	2541-21490	AHY-U	09-Oct-10	14-Oct-10	5	28.3	26.3	-2.0	-7.1%
White-throated Sparrow	2541-21492	HY-U	09-Oct-10	14-Oct-10	5	27.5	25.9	-1.6	-5.8%

Table 14. Cont'd. (page 3 of 5)

Species	Band No.	Age/Sex	Date Banded	Date Recaptured	No. of days	Original Weight	Weight at Recapture (g)	Gain/Loss (g)	Gain/Loss (%)
White-throated Sparrow	2541-21495	HY-U	09-Oct-10	13-Oct-10	4	25.6	25.0	-0.6	-2.3%
White-throated Sparrow	2541-21541	HY-U	13-Oct-10	20-Oct-10	7	22.9	25.2	+2.3	+10.0%
White-throated Sparrow	2541-21546	AHY-U	13-Oct-10	20-Oct-10	7	27.0	27.7	+0.7	+2.6%
White-throated Sparrow	2541-21564	HY-U	13-Oct-10	23-Oct-10	10	23.4	23.5	+0.1	+0.4%
White-throated Sparrow	2541-21570	HY-U	14-Oct-10	20-Oct-10	6	22.7	23.4		
				23-Oct-10	9	23.4	23.9	+1.2	+5.3%
White-throated Sparrow	2541-21576	AHY-U	14-Oct-10	29-Oct-10	15	25.6	24.4	-1.2	-4.7%
White-throated Sparrow	2541-21651	HY-U	20-Oct-10	29-Oct-10	9	26.4	25.7	-0.7	-2.6%
White-throated Sparrow	2541-21665	HY-U	23-Oct-10	03-Nov-10	11	27.1	26.7	-0.4	-1.5%
White-throated Sparrow	2541-21785	HY-U	29-Oct-10	03-Nov-10	5	26.0	21.3	-4.7	-18.1%
White-crowned Sparrow	2541-21355	AHY-U	07-Oct-10	14-Oct-10	7	27.9	34.6	+7.7	+27.6%
White-crowned Sparrow	2541-21377	HY-U	07-Oct-10	20-Oct-10	13	29.1	25.9	-3.2	-11.0%
White-crowned Sparrow	2541-21402	HY-U	07-Oct-10	13-Oct-10	6	30.3	28.0		
				14-Oct-10	7	28.0	28.1	-2.2	-7.3%
White-crowned Sparrow	2541-21416	HY-U	09-Oct-10	20-Oct-10	11	27.1	31.1	+4.0	+14.8%
White-crowned Sparrow	2541-21439	HY-U	09-Oct-10	13-Oct-10	4	24.2	27.1	+2.9	+12.0%
White-crowned Sparrow	2541-21500	HY-U	09-Oct-10	13-Oct-10	4	28.2	28.0		
				20-Oct-10	11	28.0	28.8	+0.6	+2.1%
White-crowned Sparrow	2541-21547	HY-U	13-Oct-10	20-Oct-10	7	27.2	29.4	+2.2	+8.1%
White-crowned Sparrow	2541-21601	HY-U	14-Oct-10	20-Oct-10	6	26.4	27.7	+1.3	+4.9%
White-crowned Sparrow	2541-21639	AHY-U	20-Oct-10	23-Oct-10	3	31.3	31.6	+0.3	+1.0%
White-crowned Sparrow	2541-21646	HY-U	20-Oct-10	29-Oct-10	9	35.7	35.2	-0.5	-1.4%
White-crowned Sparrow	2541-21778	HY-U	29-Oct-10	03-Nov-10	5	25.3	24.8	-0.5	-2.0%
American Goldfinch	2401-00921	HY-M	14-Aug-10	27-Aug-10	13	13.3	13.4		
				28-Aug-10	14	13.4	13.4	+0.1	+0.8%
American Goldfinch	2401-00922	HY-M	14-Aug-10	27-Aug-10	13	13.3	13.2		
				31-Aug-10	17	13.2	13.0	-0.3	-2.2%
American Goldfinch	2401-00924	HY-M	14-Aug-10	31-Aug-10	17	13.1	12.0	-1.1	-8.4%
American Goldfinch	2401-00929	HY-F	18-Aug-10	08-Sep-10	21	12.2	11.2	-1.0	-8.2%
American Goldfinch	2401-00933	HY-F	18-Aug-10	05-Sep-10	18	11.8	11.4	-0.4	-3.4%
American Goldfinch	2401-00939	HY-F	18-Aug-10	28-Aug-10	10	10.9	10.1	-0.8	-7.3%
American Goldfinch	2401-00950	HY-F	27-Aug-10	28-Aug-10	1	12.3	12.5	+0.2	+1.6%
American Goldfinch	2401-00954	HY-M	27-Aug-10	31-Aug-10	4	13.0	12.6		
				05-Sep-10	9	12.6	11.6	-1.4	-10.8%
American Goldfinch	2401-00955	HY-F	27-Aug-10	18-Sep-10	22	12.0	11.8	-0.2	-1.7%
American Goldfinch	2401-00958	HY-M	27-Aug-10	05-Sep-10	9	10.3	10.9	+0.6	+5.8%
American Goldfinch	2401-00960	HY-M	27-Aug-10	28-Aug-10	1	12.2	12.0		
				31-Aug-10	4	12.0	11.6	-0.6	-4.9%
American Goldfinch	2401-00961	HY-F	27-Aug-10	28-Aug-10	1	10.5	10.3		
				31-Aug-10	4	10.3	10.1		
				05-Sep-10	9	10.1	10.3	-0.2	-1.9%
American Goldfinch	2401-00968	HY-M	27-Aug-10	05-Sep-10	9	12.0	11.9		
				18-Sep-10	22	11.9	11.9	-0.1	-0.8%
American Goldfinch	2401-00973	HY-F	27-Aug-10	31-Aug-10	4	10.4	10.7	+0.3	+2.9%
American Goldfinch	2401-00975	HY-M	27-Aug-10	31-Aug-10	4	11.7	12.4	+0.7	+6.0%
American Goldfinch	2401-00977	AHY-F	27-Aug-10	31-Aug-10	4	12.9	11.9		
				08-Sep-10	12	11.9	12.2	-0.7	-5.4%
American Goldfinch	2401-00978	HY-F	27-Aug-10	05-Sep-10	9	12.6	11.4	-1.2	-9.5%

Table 14. Cont'd. (page 4 of 5)

Species	Band No.	Age/Sex	Date Banded	Date Recaptured	No. of days	Original Weight	Weight at Recapture (g)	Gain/Loss (g)	Gain/Loss (%)
American Goldfinch	2401-00979	HY-M	27-Aug-10	28-Aug-10	1	13.2	13.1	-0.1	-0.8%
American Goldfinch	2401-00982	HY-M	27-Aug-10	02-Sep-10	6	13.0	12.1	-0.9	-6.9%
American Goldfinch	2401-00986	AHY-M	27-Aug-10	28-Aug-10	1	13.3	12.5	-0.8	-6.0%
American Goldfinch	2401-00997	HY-M	28-Aug-10	02-Sep-10	5	11.8	12.5		
				05-Sep-10	8	12.4	12.4	+0.6	+5.1%
American Goldfinch	2401-44501	HY-M	28-Aug-10	08-Sep-10	11	11.8	12.3	+0.5	+4.2%
American Goldfinch	2401-44508	HY-M	28-Aug-10	31-Aug-10	3	13.3	13.4		
				02-Sep-10	5	13.4	13.8	+0.5	+3.8%
American Goldfinch	2401-44519	HY-F	28-Aug-10	31-Aug-10	3	11.2	11.7	+0.5	+4.5%
American Goldfinch	2401-44526	HY-F	31-Aug-10	05-Sep-10	5	11.3	12.2	+0.9	+8.0%
American Goldfinch	2401-44532	HY-F	31-Aug-10	02-Sep-10	2	11.2	11.1	-0.1	-0.9%
American Goldfinch	2401-44560	HY-F	02-Sep-10	15-Sep-10	13	12.8	12.8	0	0%
American Goldfinch	2401-44564	HY-F	02-Sep-10	08-Sep-10	6	12.0	12.3		
				22-Sep-10	20	12.3	12.8	+0.8	+6.7%
American Goldfinch	2401-44565	HY-M	02-Sep-10	07-Oct-10	35	12.7	12.6		
				13-Oct-10	41	12.6	12.4		
				14-Oct-10	42	12.4	12.5		
				29-Oct-10	57	12.5	13.8	+1.1	+8.7%
American Goldfinch	2401-44571	HY-M	02-Sep-10	05-Sep-10	3	12.2	12.2	0	0%
American Goldfinch	2401-44574	HY-M	02-Sep-10	05-Sep-10	3	11.9	12.2		
				15-Sep-10	13	12.2	11.9	0	0%
American Goldfinch	2401-44583	HY-F	02-Sep-10	07-Oct-10	35	12.5	12.4	-0.1	-0.8%
American Goldfinch	2401-44588	HY-F	02-Sep-10	05-Sep-10	3	12.5	12.0		
				08-Sep-10	6	12.0	11.7	-0.8	-6.4%
American Goldfinch	2401-44593	HY-M	02-Sep-10	08-Sep-10	6	12.4	12.0	-0.4	-3.2%
American Goldfinch	2401-44594	HY-M	02-Sep-10	15-Sep-10	13	11.7	12.6	+0.9	+7.7%
American Goldfinch	2401-44609	HY-F	05-Sep-10	20-Oct-10	45	10.4	12.4	+2.0	+19.2%
American Goldfinch	2401-44613	HY-F	05-Sep-10	08-Sep-10	3	10.3	10.7	+0.4	+3.9%
American Goldfinch	2401-44624	HY-F	05-Sep-10	15-Sep-10	10	10.8	11.3	+0.5	+4.6%
American Goldfinch	2401-44655	HY-F	05-Sep-10	22-Sep-10	17	12.2	13.1	+0.9	+7.4%
American Goldfinch	2401-44664	HY-M	05-Sep-10	25-Sep-10	20	13.0	12.5	-0.5	-3.8%
American Goldfinch	2401-44667	HY-F	08-Sep-10	15-Sep-10	7	10.9	11.0	+0.1	+0.9%
American Goldfinch	2401-44681	HY-F	08-Sep-10	15-Sep-10	7	10.6	12.0	+1.4	+13.2%
American Goldfinch	2401-44693	AHY-F	08-Sep-10	15-Sep-10	7	11.1	11.9	+0.8	+7.2%
American Goldfinch	2401-44712	AHY-M	15-Sep-10	03-Nov-10	49	13.0	15.2	+2.2	+16.9%
American Goldfinch	2401-44718	HY-M	15-Sep-10	24-Sep-10	9	12.2	12.9		
				29-Oct-10	44	12.9	15.1	+2.9	+23.8%
American Goldfinch	2401-44745	HY-M	15-Sep-10	18-Sep-10	3	12.9	12.6	-0.3	-2.3%
American Goldfinch	2401-44772	HY-M	18-Sep-10	13-Oct-10	25	12.9	14.6	+1.7	+13.2%
American Goldfinch	2401-44842	HY-F	25-Sep-10	23-Oct-10	28	13.3	14.1	+0.8	+6.0%
American Goldfinch	2401-44897	HY-F	07-Oct-10	09-Oct-10	2	11.8	12.7		
				13-Oct-10	6	12.7	12.5		
				14-Oct-10	7	12.5	12.1		
				29-Oct-10	22	12.1	13.0	+1.2	+10.2%
American Goldfinch	2401-44900	HY-M	07-Oct-10	29-Oct-10	22	13.9	14.6	+0.7	+5.0%
American Goldfinch	2401-44902	HY-M	07-Oct-10	13-Oct-10	6	13.9	14.3		
				14-Oct-10	7	14.3	13.1	-0.8	-5.8%
American Goldfinch	2401-44913	HY-F	07-Oct-10	13-Oct-10	6	13.5	14.4		
				20-Oct-10	13	14.4	15.3	+1.8	+13.3%

Table 14. Cont'd. (page 5 of 5)[illegible]

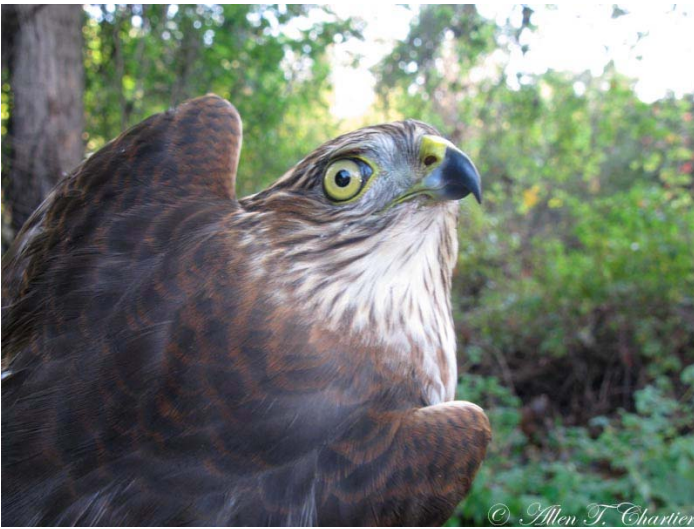
FALL 2010 - PHOTO HIGHLIGHTS



Hatch-year female Sharp-shinned Hawk. Compare the larger size with the male at right.



Hatch-year male Sharp-shinned Hawk. Note the smaller size (compared with the hand).



Hatch-year female Sharp-shinned Hawk. Yellow eyes and brownish upperparts are characteristic of hatch-years.



Hatch-year male Sharp-shinned Hawk. The streaking on the underparts also identify this as a hatch-year.



After hatch-year female Mourning Dove. This was the first banded here since 1992.



After hatch-year female Northern Rough-winged Swallow. This was the first ever banded here in fall.



Hatch-year female Yellow-bellied Sapsucker. An infrequently banded species, this was only the 9th ever banded here.



Hatch-year female Red-breasted Nuthatch. An infrequently banded species, this was only the 10th ever banded here.



Hatch-year, sex unknown, Blue-gray Gnatcatcher. This was the first in fall since 1990, and only the 7th since 2004. A total of 19 was banded (most in spring) from 1989-1999.



Hatch-year, sex unknown, Philadelphia Vireo. Infrequently banded in recent years, this was only the 4th since 2004. A total of 48 was banded from 1989-1999.



Hatch-year female Cape May Warbler. This was the first since 1994, and one of two this fall. A total of 16 was banded here from 1989-1994.



Hatch-year male Northern Parula. One of three banded on the same day! Infrequently banded here, these were the 8th, 9th, and 10th since 2004 and the 16th to 18th since 1989.



Hatch-year female Connecticut Warbler. Infrequently banded here, this was the 12th since 1989 and the 4th since 2004.



Hatch year, sex unknown, Field Sparrow. Another infrequently banded species, this was only the 8th since 1989 and the 4th since 2004.



Hatch-year male Blackburnian Warbler. One of four banded this fall in a record season.



Hatch-year male Black-throated Blue Warbler. This individual showed female-like characteristics including white markings above and below the eye, and yellowish underparts. Record numbers were banded this fall.



Hatch-year male American Redstart. The fall of 2010 was the best in many years for this species.



Hatch-year, sex unknown, Blackpoll Warbler. It was a record fall season for this species.



After hatch-year male Magnolia Warbler. Adults are typically in the minority in the fall season. This species had a good showing this fall.



Hatch-year, sex unknown, Lincoln's Sparrow. This fall's record of 36 banded was more than twice the previous record.